



68 Fordbridge Road, Ashford, TW15 2SP

£1,375,000

68 Fordbridge Road, Ashford, TW15 2SP

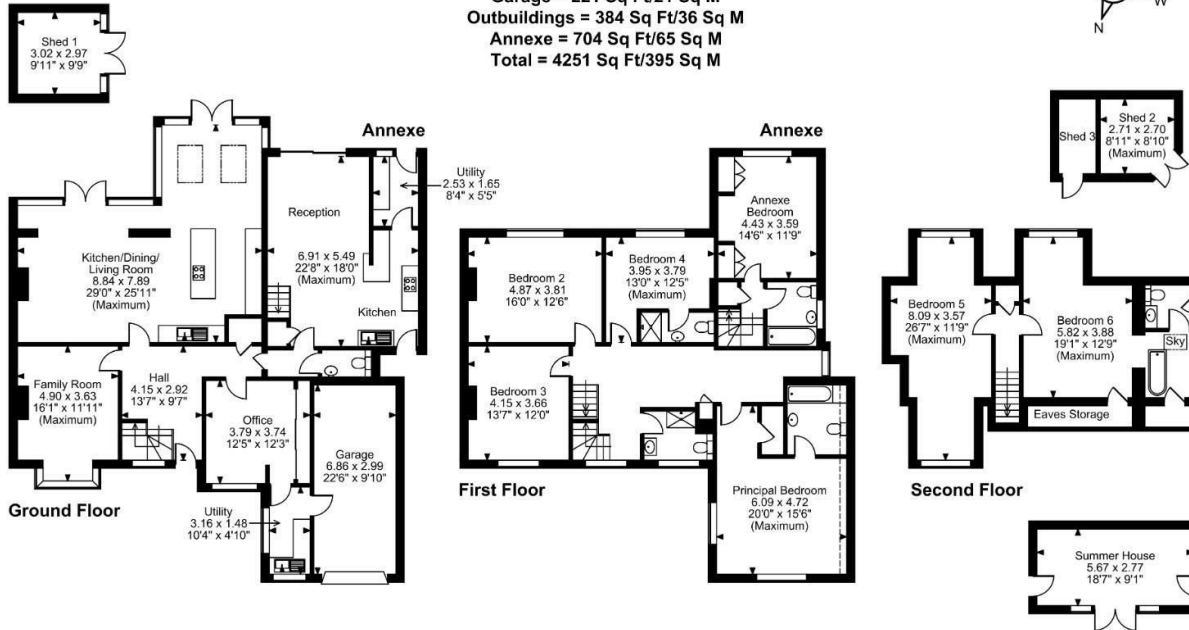
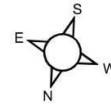
An attractive and immaculately presented seven-bedroom, five-bathroom family home offering substantial and versatile accommodation, including a superb 700 sq ft self-contained one-bedroom annex arranged over two floors. The annex benefits from its own private front door, utility room, modern upstairs bathroom, and an impressive 22ft kitchen/lounge (with integrated Neff appliances) and patio doors opening onto its own decked area overlooking the garden — ideal for multi-generational living, guests, or home-and-income potential. The main house further provides a well-proportioned reception rooms, impressive kitchen/dining/living room overlooking garden, office, downstairs W.C., separate utility room, and a generous 22ft garage, all presented in excellent decorative order throughout.

Externally, the property enjoys a particularly large rear garden backing onto Ashford Manor Golf Course, creating a wonderful sense of space and privacy. The garden features a heated swimming pool and contemporary summer house, perfect for entertaining or relaxing in the warmer months. Three of the rooms in the property also benefit from air conditioning. To the front, a spacious driveway provides ample off-street parking for multiple vehicles. A truly impressive and unique home offering exceptional flexibility and lifestyle appeal — early internal viewing is highly recommended. Call Alex White and his market leading sales team at Aspen estate agents.



Floor Plan

Fordbridge Road, Ashford
Approximate Gross Internal Area
Main House = 2942 Sq Ft/273 Sq M
Garage = 221 Sq Ft/21 Sq M
Outbuildings = 384 Sq Ft/36 Sq M
Annexe = 704 Sq Ft/65 Sq M
Total = 4251 Sq Ft/395 Sq M



Features

- Immaculately presented seven-bedroom, five-bathroom detached family home
- Annex with private entrance, utility room, bathroom and 22ft kitchen/lounge with garden access
- Spacious and versatile main accommodation in excellent decorative order
- Generous 22ft garage and large driveway with parking for multiple vehicles
- Heated swimming pool and contemporary summer house ideal for entertaining
- Superb 700 sq ft self-contained one-bedroom annex over two floors
- Ideal for multi-generational living, guests or home-and-income potential
- Well-proportioned home office plus separate utility room
- Exceptionally large rear garden backing onto Ashford Manor Golf Course
- Unique, high-quality home offering outstanding lifestyle appeal

FOR ILLUSTRATIVE PURPOSES ONLY - NOT TO SCALE
 The position & size of doors, windows, appliances and other features are approximate only.
 □ □ □ □ Denotes restricted head height
 © ehouse. Unauthorised reproduction prohibited. Drawing ref. dig/8680036/NJD

Aspen Residential Services
 77 Church Road, Ashford, Surrey, TW15 2PE
 Tel: 01784 252 202
 Email: enquiries@aspensalesandlettings.com



Tenure - Freehold Council Tax Band - G

